



**West to East –
Overbeck to Leidy Project
Open Houses**

March 1 – 4, 2010



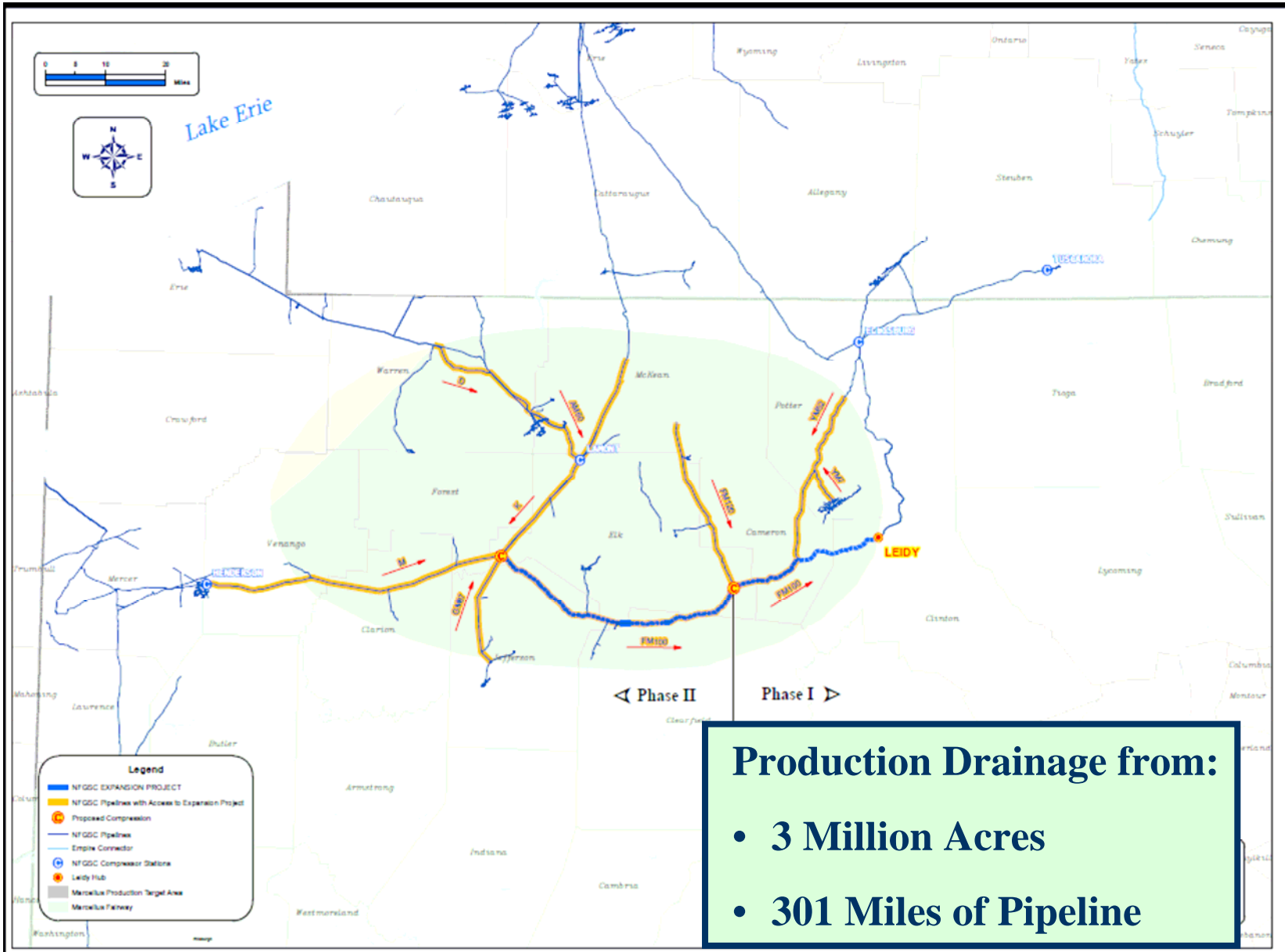
- **100+ years experience in New York and Pennsylvania**
- **Parent company of National Fuel Gas Supply Corporation**
- **Four main business segments:**
 - **Exploration & Production**
 - **Pipeline & Storage: owns and operates 2,800 miles of interstate natural gas pipelines**
 - **Utility**
 - **Energy Marketing**

National Fuel Gas Company



- **Natural gas supplies 24% of all energy used in the U.S.**
 - **In 2008, the U.S. consumed 23.2 Tcf of natural gas.**
 - **Consumption of natural gas will increase 20% by 2030, according to the U.S. Department of Energy (DOE).**
- **Natural gas is delivered to customers through a safe, 2.3 million mile underground pipeline system that includes 300,000 miles of transmission lines.**

Natural Gas is in Demand



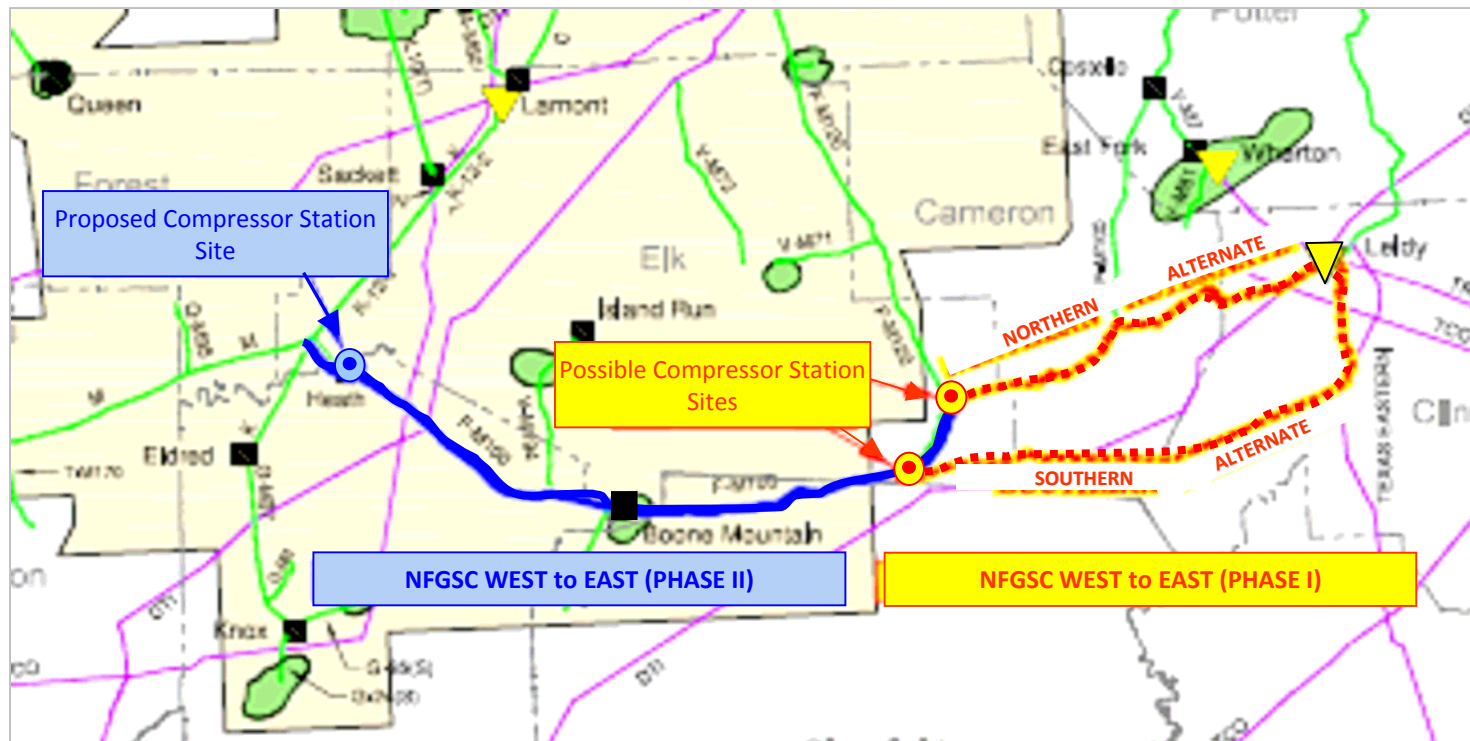
Project Area

- **Phase I:**

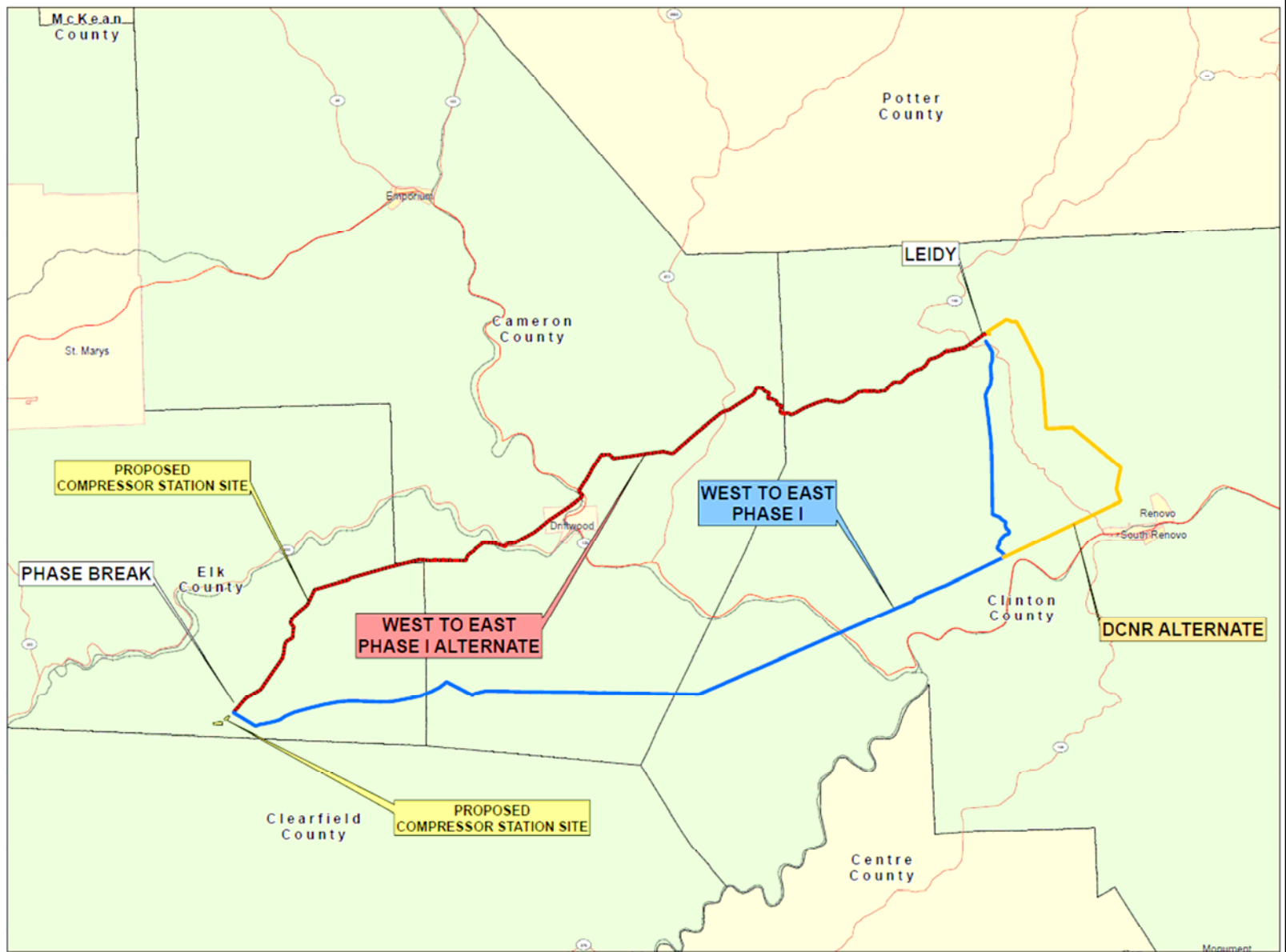
- 39 Miles 24" 1440 psig pipeline
- Approx. 7,000 Hp @ Station in Moshannon State Forest

- **Phase II:**

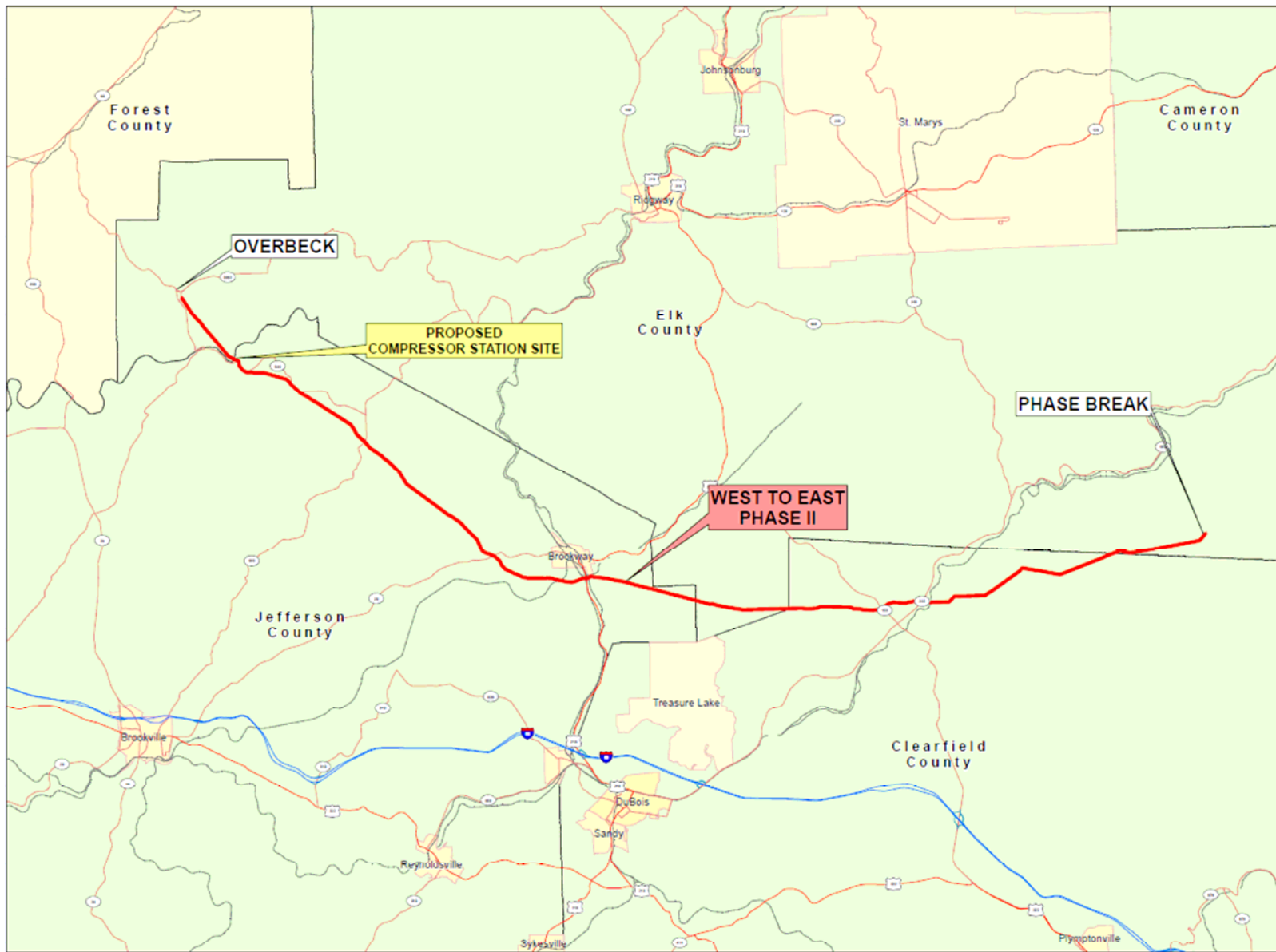
- 43 Miles 24" 1440 psig pipeline
- Approx. 19,000 Hp @ at Heath Station



Project Facilities



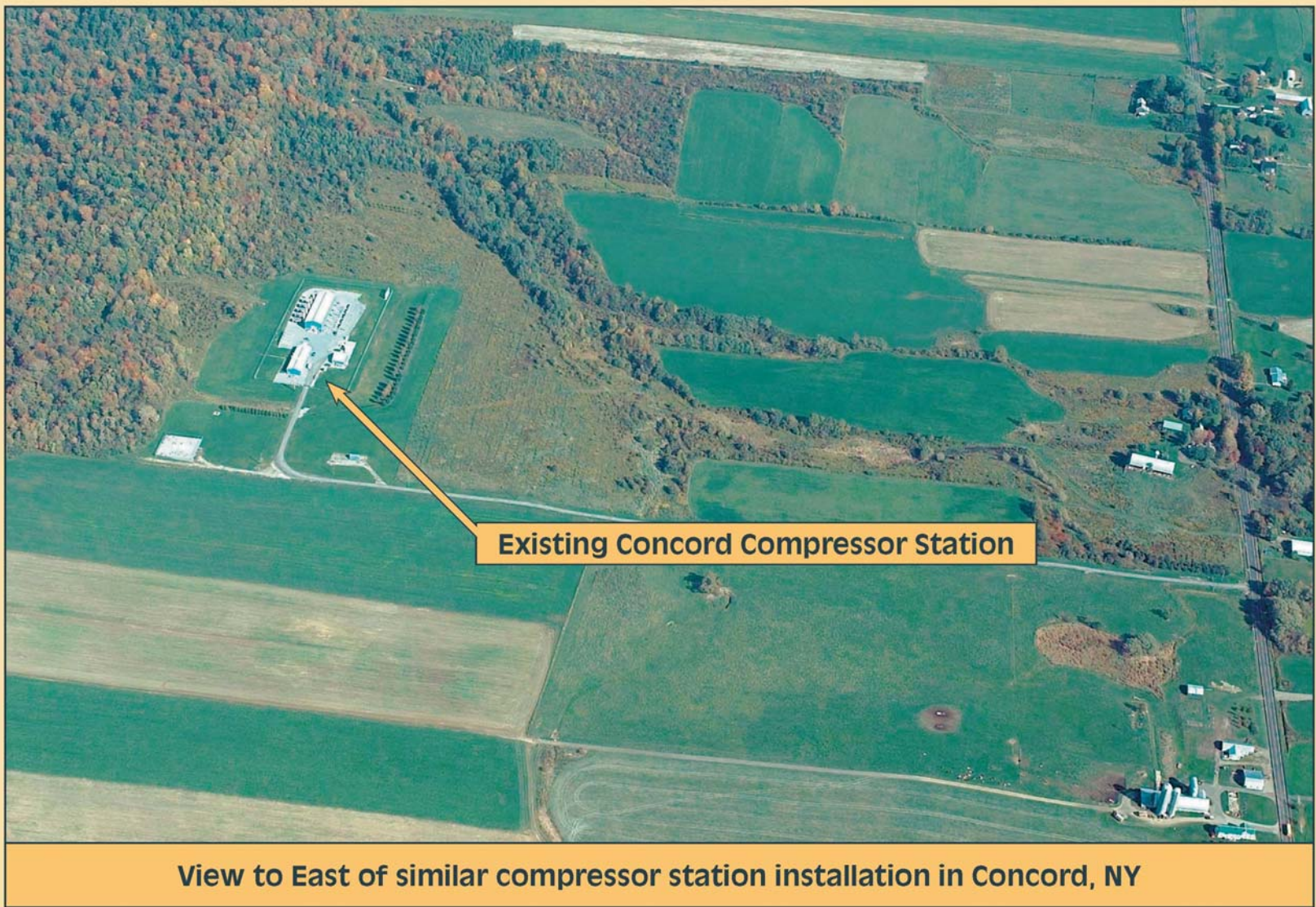
Phase I Map



Phase II Map



Oakfield, NY Compressor Station



View to East of similar compressor station installation in Concord, NY

Concord, NY Compressor Station

Fall 2009	Preliminary Environmental and Engineering Studies
March 2010	Anticipate FERC pre-filing process
September 2010	Submit 7(c) application to FERC
March 2011	Anticipated FERC approval
April 2011	National Fuel begins site work
May 2011	National Fuel begins construction
November 2011	Phase I in-service date
November 2012	Phase II in-service date
Phase I – Summer 2012 – ongoing Phase II – Summer 2013 - ongoing	Final Restoration and Crop Monitoring

Project Timeline



- **Minimize impact to landowners**
 - Use of existing corridors
 - Use of public lands
- **Engineering and technical issues**
- **Least disturbance of land**
- **Natural resource preservation**
- **Cultural and archeological resource preservation**
- **Connection to existing National Fuel transmission system**

Factors in Route Selection



- **Safety is our priority**
- **Outstanding safety record**
- **Pipeline and compressor stations constructed and maintained to meet or exceed federal safety code**
- **Compressor station equipped with state-of-the-art emergency shutdown system**
- **Monitored 24/7 by Gas Dispatch**
- **Regulated and inspected by U.S. Dept. of Transportation**

Safety



- **Promotes understanding of issues impacting your land**
- **Surveying does not harm the land**
 - **Surveying property – mostly by walking land**
 - **Minimal digging, if necessary**
- **Company representatives carry National Fuel photo ID at all times**
- **Will not ask to enter your home for any reason**

Surveying in Your Area



- **Compensation for private ROW:**
 - **Land use and ROW access**
 - **Based on open market property values**
 - **Economic loss caused by construction**
- **Land restored to original or better condition**
- **Compensation for Compressor Station property:**
 - **Phase I - State Forest lease**
 - **Phase II - Purchase from National Fuel affiliate**

Landowner Compensation



Before



During



After

Proven Results



Contact: **Sandy James**
Assistant Director
Corporate Communications

Phone: **1-800-677-8004**

Address: **Feedback**
c/o Corporate Communications
PO Box 2081, 1100 State Street
Erie, PA 16512-2081

Online: **www.NationalFuelGas.com**

Questions, Comments & Input