



**Line N Pipeline Replacement &  
Relocation Project  
Greene & Washington Counties**

**August 2009**



- **Extensive community involvement early on**
- **Open dialogue with the public**
- **We are here to:**
  - Answer your questions
  - Listen to your comments
  - Gather your input
- **Please hold questions until the end**

**Community Involvement**



- **100+ years experience in Pennsylvania**
- **Parent company of National Fuel Gas Supply Corporation**
- **Four main business segments:**
  - **Exploration & Production**
  - **Pipeline & Storage: owns and operates 2,800 miles of interstate natural gas pipelines**
  - **Utility**
  - **Energy Marketing**

**National Fuel Gas Company**



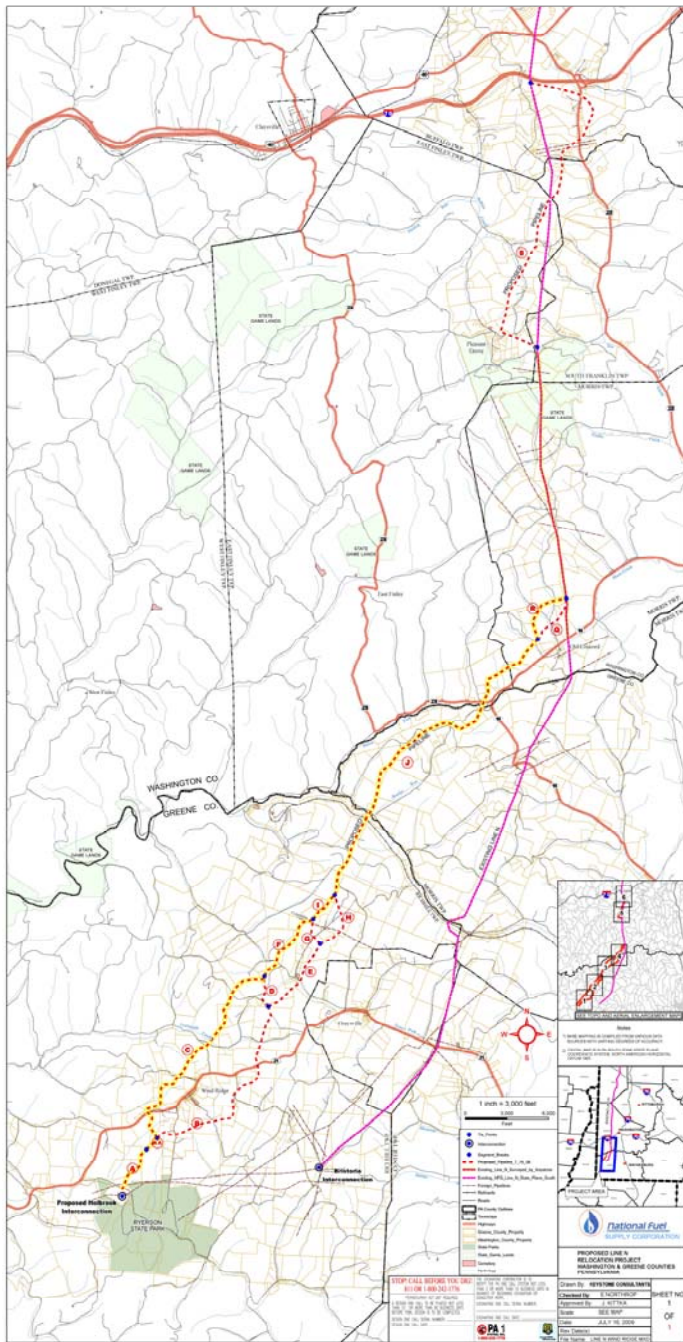


- **Will replace and relocate an important piece of our existing natural gas pipeline.**
  - **Safest way to manage impacts of mining activity on our system and our customers.**
- **Will provide reliable supplies of energy to western PA and the northeastern U.S.**
- **Will help meet future capacity requirements for gas transported from the Marcellus Shale, a local resource base, to markets in the northeast.**
- **20-inch pipe buried a minimum of three feet underground. Total Capacity: 200 MMcf/day**

## **Project Overview**

<b>Summer &amp; Fall 2009</b>	<b>Environmental and Engineering Studies</b>
<b>January 2010</b>	<b>Submit application to FERC</b>
<b>Spring 2010 – Early 2011</b>	<b>Negotiate rights-of-way</b>
<b>January 2011</b>	<b>Anticipate FERC approval</b>
<b>Winter 2011</b>	<b>Begin clearing right-of-way</b>
<b>Spring 2011</b>	<b>Construction begins</b>
<b>Summer – Fall 2011</b>	<b>Restoration activities begin</b>
<b>Late 2011</b>	<b>Service date</b>
<b>Summer 2012 – ongoing</b>	<b>Remaining restoration; monitor crop yields</b>

# Project Timeline



## Segment One:

- Begins at Interstate 70, ends at Franklin/Morris Township line

## Segment Two:

- Begins north of Route 18 at Old Concord, ends at Holbrook-Texas Eastern Compressor Station

# Preliminary Route









- **Seeking permission for:**
  - **Surveying property – mostly by walking land**
  - **Minimal digging if necessary**
- **Surveying does not harm the land**
- **Company representatives carry photo ID at all times**
- **Will not ask to enter your home for any reason**

**Surveying in Your Area**



- **Compensation for:**
  - **Land use and right-of-way access**
  - **Economic loss caused by construction**
- **Based on open market property values**
- **Land restored to original or better condition**

**Landowner Compensation**



*Before*

*During*



*After*



**Proven Results**



**Contact:** Julie Coppola Cox  
Assistant General Manager  
Corporate Communications

**Phone:** 1-800-365-3234, extension 7079

**Address:** Feedback  
c/o Corporate Communications Dept.  
6363 Main Street  
Williamsville, NY 14221

**Online:** [www.NationalFuelGas.com](http://www.NationalFuelGas.com)

**Questions, Comments & Input**